

15. 5. 2020

Preveri svoje znanje o enotah in ploščinah. REŠITVE

1. Izrazi v zahtevani enoti !

$$8 \text{ dm} = \underline{80} \text{ cm}$$

$$0,4 \text{ m} = \underline{4} \text{ dm}$$

$$3,7 \text{ m} = \underline{0,0037} \text{ km}$$

$$34900 \text{ mm} = \underline{34,9} \text{ m}$$

$$2 \text{ dm } 7 \text{ cm} = \underline{27} \text{ cm}$$

$$72 \text{ m} = \underline{0,072} \text{ km}$$

$$160 \text{ mm} = \underline{1,6} \text{ dm}$$

$$6,5 \text{ km} = \underline{650\,000} \text{ cm}$$

$$27 \text{ a} = \underline{2700} \text{ m}^2 = \underline{270\,000} \text{ dm}^2$$

$$16400 \text{ cm}^2 = \underline{164} \text{ dm}^2 = \underline{1,64} \text{ m}^2$$

$$820 \text{ ha} = \underline{8,2} \text{ km}^2$$

$$1235 \text{ m}^2 = \underline{12,35} \text{ a}$$

$$\frac{3}{5} \text{ m}^2 = \underline{60} \text{ dm}^2$$

$$(100 \text{ dm}^2 : 5) \cdot 3 = 60 \text{ dm}^2$$

2. Izračunaj !

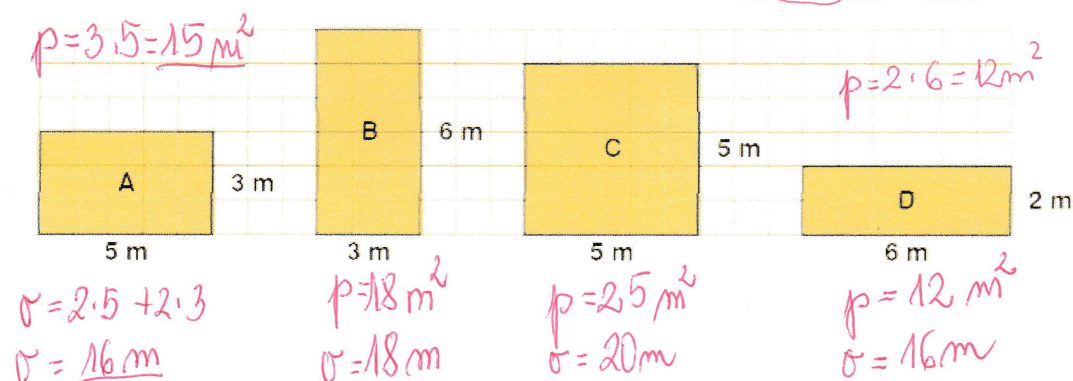
a) $6 \text{ m}^2 + 15 \text{ dm}^2 + 12000 \text{ cm}^2 = \underline{600 \text{ dm}^2} + \underline{15 \text{ dm}^2} + \underline{120 \text{ dm}^2} =$
 $\underline{735 \text{ dm}^2} = \underline{7,35 \text{ m}^2} = \underline{73500 \text{ cm}^2}$

b) $3,12 \text{ m}^2 + 835 \text{ dm}^2 - 7500 \text{ cm}^2 = \underline{3,12 \text{ m}^2} + \underline{8,35 \text{ m}^2} - \underline{0,75 \text{ m}^2} =$
 $\underline{10,72 \text{ m}^2} = \underline{1072 \text{ dm}^2} = \underline{107200 \text{ cm}^2}$

3. Na sliki so 4 vrtno grede. Katera ima največjo ploščino ? **C**

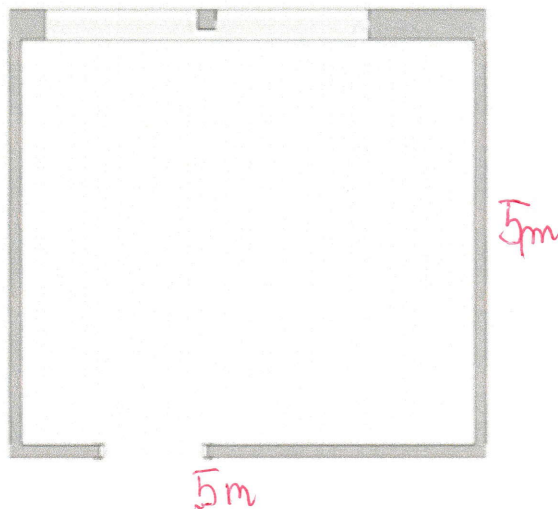
Katera ima največji obseg ?

$$p = a \cdot b \quad \sigma = 2 \cdot a + 2 \cdot b \quad \mathbf{C}$$



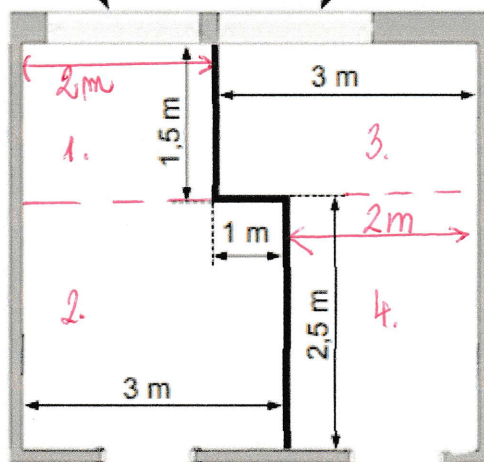
4. Miha in Neža sta imela skupno sobo.

Njuna skupna soba



Starši so njuno skupno sobo razdelili tako, da imata vsak svojo sobo.

Nežina soba Mihova soba



$$p_1 = 2 \cdot 1,5 = 3 \text{ m}^2$$
$$p_2 = 3 \cdot 2,5 = 7,5 \text{ m}^2$$
$$p_N = 3 \text{ m}^2 + 7,5 \text{ m}^2$$
$$\underline{p_N = 10,5 \text{ m}^2}$$

$$p_3 = 3 \cdot 1,5 = 4,5 \text{ m}^2$$
$$p_4 = 2 \cdot 2,5 = 5 \text{ m}^2$$
$$p_M = 4,5 \text{ m}^2 + 5 \text{ m}^2$$
$$\underline{p_M = 9,5 \text{ m}^2}$$

Čigava soba je večja? Za koliko?

$$10,5 \text{ m}^2 - 9,5 \text{ m}^2 = \underline{\underline{1 \text{ m}^2}}$$

Odgovor: Večja je Nežina soba za 1 m^2 .